

Activity Items Available

1. Clear Human Jaw Model



The Clear Human Jaw Model is a life-sized typodont that allows viewing of anatomical roots. Divided into hemi-arches one side features a normal dentition, while the other half shows multiple pathologies, including:

- Periodontal disease and lateral abscess.
- Apical alveolar abscess with caries.
- Implant, root canal, and crown.
- External and internal resorption.
- Irregular root curvature.
- Horizontal impaction.
- Impacted canine.
- Fractured tooth and root.
- Radicular pulpitis.
- Super eruption.
- Abfraction.
- Erosion.
- Attrition.

Each model is complete with one full-color plastic card labeling each case on both mandibular and maxillary sides as shown above.

All Pathologies can be explained by the presenter while using the normal dentition side for visuals of the root structures of each tooth. This is a great full-mouth model to compare healthy teeth with possible pathologies that can happen with long-term neglect and poor oral hygiene.

Teeth are not able to be removed from the model.

2. Pathological Gingivitis Model



The pathological gingivitis model is a life-sized typodont of an upper and lower arch with 32 anatomical, removable teeth. Divided in hemi-arches, one side features transparent gingiva with natural teeth, while the other side has soft, natural-colored gingiva and illustrates various stages of gingivitis and periodontitis, including sacs, inflammation, gum recession, and furcation.

Presenters can educate on the various stages of periodontitis while using the model and each tooth individually for visuals. The presenter can explain all pathologies while using the normal dentition side for visuals of the root structures of each tooth. This is a great full-mouth model to compare healthy teeth with possible pathologies that can happen with long-term neglect and poor oral hygiene.

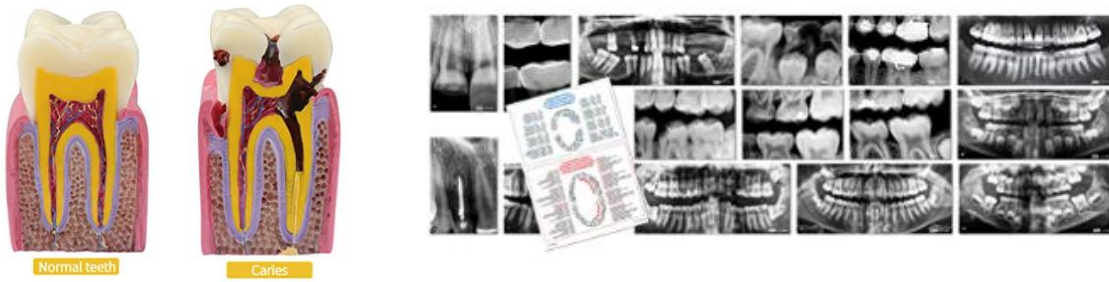
Proper brushing techniques can be demonstrated and use the examples of recession/abrasion on the models as side effects of improper brushing.

Proper Flossing technique can be demonstrated and the unhealthy side of the model as a comparison for side effects of poor flossing habits long term.

The anatomy of each tooth is accurate and great for a tactile educational tool when explaining how the morphology and anatomy of teeth change from tooth to tooth.

***Connect with the Center for Rural Health for floss and toothbrush supplies if needed.**

3. Tooth Model and Sample X-Rays Kit



Tooth Model Size (3.93 x 3.93 x 2.95) inches

The tooth Model shows the anatomy of a healthy tooth on one side while the other side shows a carious lesion.

Presenters can use this model for a great visual as a comparison of a healthy tooth versus an unhealthy tooth. The healthy side of the model shows the layers of a healthy tooth (enamel, dentin, root canal, etc.) and a healthy gumline. The unhealthy side can be used to show a carious lesion, unhealthy gumline, and infected pulp.

The model is perfect to use side by side with an X-ray to give a 3-D visual.

Sample dental X-rays are a great way to see inside the mouth the way a dentist would. With this set the presenter will have 15 real X-rays that show primary and permanent teeth, unhealthy teeth, mouth injuries, and more including:

- Good oral hygiene/poor oral hygiene
- Cavity in permanent tooth
- Cavity/filling
- Cavity/filling between teeth
- Crowding
- Impacted teeth
- Braces
- Root canal
- Broken Tooth
- Crowns
- 6-year-old development
- 12-year-old development
- 18-year-old development

Included is a development chart and guide for primary and permanent teeth. This will give a visual of how the development of healthy teeth progresses from young children to young adults.

Hold X-rays up to a light source such as a window or lamp for best results.

4. Dental Simulator Mannequin Head Kit



This dental simulator mannequin head is great to give the student hands-on experience as a dentist, dental hygienist, or dental assistant. The mannequin has a fixed adult typodont inside the flexible jaw and can be fixed on the desk, but the head and neck are flexible. Students can adjust the position of the head for their needs.

The presenter can demonstrate using a dental mirror and explorer in a mouth while explaining some of the challenges of mirror images and small spaces each profession is faced with. A flossing technique used when flossing on someone else can be demonstrated.

When using the Intraoral camera, techniques that a dentist, hygienist, and dental assistant would use can be demonstrated. For example, explain some reasons why an intra-oral picture may be needed. For instance, the presenter can show how pictures of cavities are commonly taken to document in the chart and are sometimes used to send to insurance companies when making a claim.

When the student is using the intra-oral camera, they will get the experience of working in small and dark spaces and mirror images.

Accessories included in the kit:

- Mannequin head
- MouthWatch intraoral Camera
- Dental Instrument kit (mirror and explorer)
- Floss

Intra-oral cameras will need to be connected to a computer or tablet. A computer or tablet is not provided. Works with Windows, Mac OS X*, and even Android. Hassle-free USB connection.

***Connect with the Center for Rural Health for flossing supplies if needed.**

5. Oral Health Hygiene Kit



This kit is a great combination when focusing on oral hygiene instructions and side effects. And is perfectly complimented with the *water bottle toothbrush kits.

All kits include:

- Disclosing agent tablets 1 box- 248 tablets
*See “Things you want to consider” below.
- Pre-pasted Toothbrushes
- Large adult full-mouth model
- Large toothbrush
- The Grossest, Tully Terrifying, But Utterly Awesome Mouth Book

Features and Benefits that can be presented when using the kit:

- Visualizes dental plaque build-up.
- Improves toothbrushing and between-teeth cleaning techniques.
- Helps children learn how to brush more effectively.
- Demonstrates the common areas where dental plaque builds up.
- Demonstrate proper brushing technique.
- Great and truly gross visuals are offered by the included book.

This disclosing agent highlights dental plaque on the tooth surfaces and demonstrates the areas where more thorough brushing and flossing are needed. It is a non-toxic vegetable dye with a pleasant cherry flavor.

***Things you may want to consider when using tablets:** When using the plaque disclosing tablets the students will need to chew the tablet for 30 seconds and then spit it out. The plaque then will turn red, these areas will need extra cleaning. Students may use the pre-pasted toothbrushes provided to brush these areas until the teeth are fully clean. Having sufficient time to complete the process and a nearby sink or water resource will need to be considered.

***Model is not able to be flossed.**

***Connect with the Center for Rural Health for interest in water bottle toothbrush kits.**

6. Full Mouth Primary and Adult Dentition Typodont Model Kit



This set of models is great for showing the transition from primary to permanent teeth or used for the practice and demonstration of students learning hygiene, assisting, and dentistry studies. All teeth are made with lifelike density and morphology.

Both models' teeth can be flossed.

***Connect with the Center for Rural Health for flossing supplies if needed.**

7. Water Bottle Toothbrush Kit



Complete each activity with these water bottle toothbrush kits. They are great for the students to leave with! It's catching colors and dental hygiene phrases of "*Your sweet enough, drink water instead!*" and "*Water fights cavities like a boss!*" is a great way to spike the interest of family and friends to ask what they learned today.

All water bottles have the option to include a toothbrush, Crest kids or adult toothpaste, and floss.

***Connect with the Center for Rural Health for the number and type of supplies needed.**